



COMPANY INFORMATION 2020

Summary

1.) THE COMPANY	3
1.1) BREB GmbH & Co.KG	3
1.2) Certification, Insurance, Associations	4
2. Activities	5
2.1) Liner-Services and Chartering	5
2.2) Port Agency	8
2.3) On-/Offshore-Industry & Wind Energy	9
3) Blue Water BREB GmbH	11
4.) Imprint and Contacts	12



1.) THE COMPANY

1.1) BREB GmbH & Co.KG

BREB GmbH & Co. KG, Cuxhaven (further BREB), has arisen from Bremer Reederei Eilermann & Bischoff GmbH, established 1951 in Bremen.

Today BREB's headoffice is located in Cuxhaven, the „German Offshore Industry Centre“, with additional branch-offices in Bremen, Lissabon, Mukran (Sassnitz) und Zeebrugge (BREB Belgium).



BREB is a fully integrated Shipping Company with own vessels, Liner-Services, Chartering-, Forwarding- and Port Agency-Department.

Through our Danish-German Joint-Venture Blue Water BREB GmbH we are also Port Terminal Operators in Cuxhaven and Sassnitz-Mukran.

Our vessels sail all European Waters from the White-Sea in the North to the Black-Sea in the South and transport

Breakbulk and Bulk, Projects and Containers.

From 2003 to 2008 three environmentally friendly vessels approved with the international environmental label **Environment-conscious Ship Operation RAL-UZ 110**, „Blauer Engel“ were built for BREB. We employ our vessels plus chartered tonnage in our own Liner-Services and through own Chartering Desk.

Since Alpha Ventus we are active in the Offshore Wind Business (**Transportation at Sea, Port-Logistics, Port-Agency**).



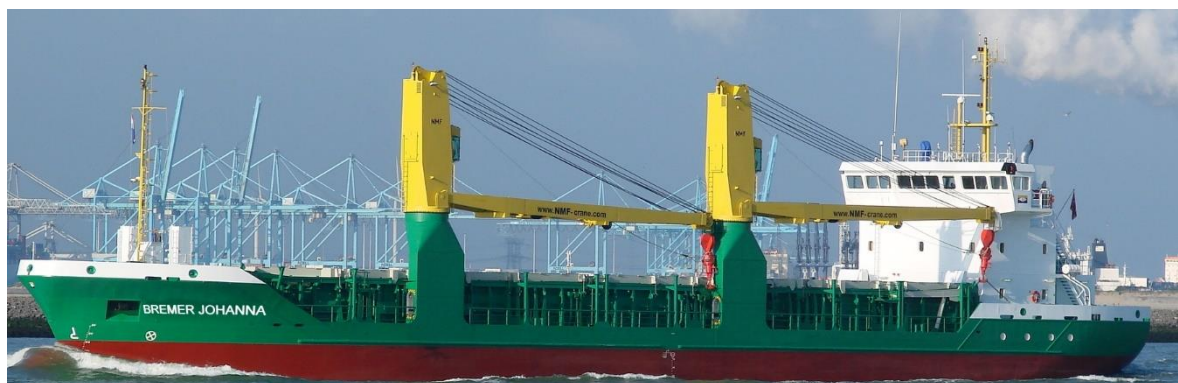
BREB is part of the Briesse-Group, Leer, Germany.

Briesse-Group is Owner of abt. 160 vessels (Project Carrier), a Tug-boat company, several Port Terminals, 30 branches worldwide with own Chartering, Port Agency, Shipmanagement, Engineering & Design, Consulting, Crewing, Shipyard and 2.500 employees.



1.2) Certification, Insurance, Associations

- BREB and BWB are approved by Lloyd's Register Quality Assurance to the following Quality, Environmental and Safety Management System Standards: **ISO 9001:2008**, **ISO 14001:2004**; **OSHAS 18001:2007** for Shipping and Chartering, Operations and Agency Services for Seagoing Vessels and Offshore Industry, Lloyd's Register Cert. No. KLN 4002417
- ITIC (International Transport Intermediaries Club Ltd), London, with a general limit of liability of 2.500.000 EUR each occurrence for agency services in the Offshore-Industry, Certificate of Entry 6222
- AKP "Verkehrshaftpflicht" covering carriage-, freight forwarding-, stevedoring and storage-contracts with limitation per incident of 5.000.000 EUR.
- Member German Shipbrokers' Association (Zentralverband Deutscher Schiffsmakler)
- Member German Shipowner Association (Verband Deutscher Reeder)
- Owner-Member at BIMCO (The Baltic and International Maritime Council)
- Member of Association of German Seaport Operators (Zentralverband der deutschen Seehafenbetriebe)



2. Activities

2.1) Liner-Services and Chartering

BREB is a highly diversified Shipping Company employing a fleet of modern geared Multi-purpose-Vessels with 4.000 – 9.000t cargo capacity in all European Waters.



The enterprise's roots lie in specially created Systemtraffics for the Scandinavian Forest Industry.

BREB's core business consists of building up shipping services by combining deliveries of semi-/finished products, like paper reels, woodpulp, sawn timber, with supply of commodities for production, like saw logs, pulp wood, woodchips and pellets, china clay.

For this purpose, BREB utilizes different Contracts of Affreightment for one or more clients and adds Tramp Shipping for maximum flexibility.

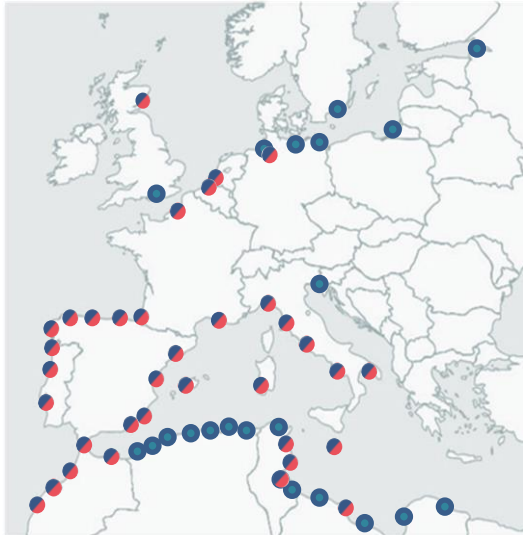
Our Chartering Department is experienced with any kind of dry cargo from Bulk to Break-bulk, General Cargo, Project Cargo and Containers, BREB Forwarding develops new ways of hinterland logistics by Rail, Truck or Barge.

BREB operates own Liner-Services to North-Africa and Med with weekly sailings from the Adriatic and biweekly sailings from the North-Continent.

Our **"BREB Adriatic Parcel Service"** includes all major Adriatic ports with Luka Koper in Slovenia as Liner-Hub. The trading area includes the North African Coast up to the Atlantic Coast of the Iberian Peninsular as well as West Africa. Up to six vessels are employed in this line offering the highest number of regular sailings of conventional tonnage to and from the Adriatic.



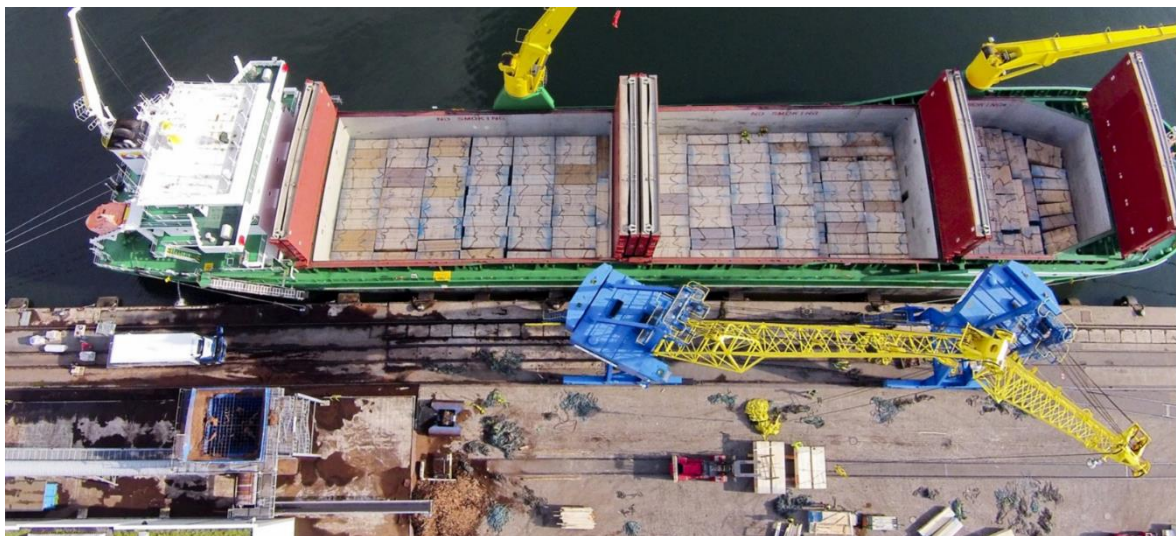
“BREB Continental Line” calls Scandinavian, German and ARAG-ports, UK- and French ports en route as well as the Iberian Peninsular and operates since 1st of January 2019 together with “Scaldic Med Lines” of Boekmanns, Belgium, as Joint Liner Service on this route with a fleet of 10 vessels ranging from 2.000 – 8.000 DWCC.



The Service carries breakbulk, general cargo, project, heavy lift and rolling stock, Containers including machinery, timber and other forest products, steels, non ferrous metals, tubes and pipes, rails and project cargoes.

All Maghreb-States are served with both Lines including all ports in Morocco, Algeria, Tunisia and Lybia with a total of abt. 100 port calls per anno.

With a long history of carrying Forest products of all kinds today’s main commodity in both Liner-Services is sawn timber, whereof BREB carries a total of 500.000 cbm per anno. Steel products and any other breakbulk and general cargoes as well as Containers and Project cargoes are shipped southbound.



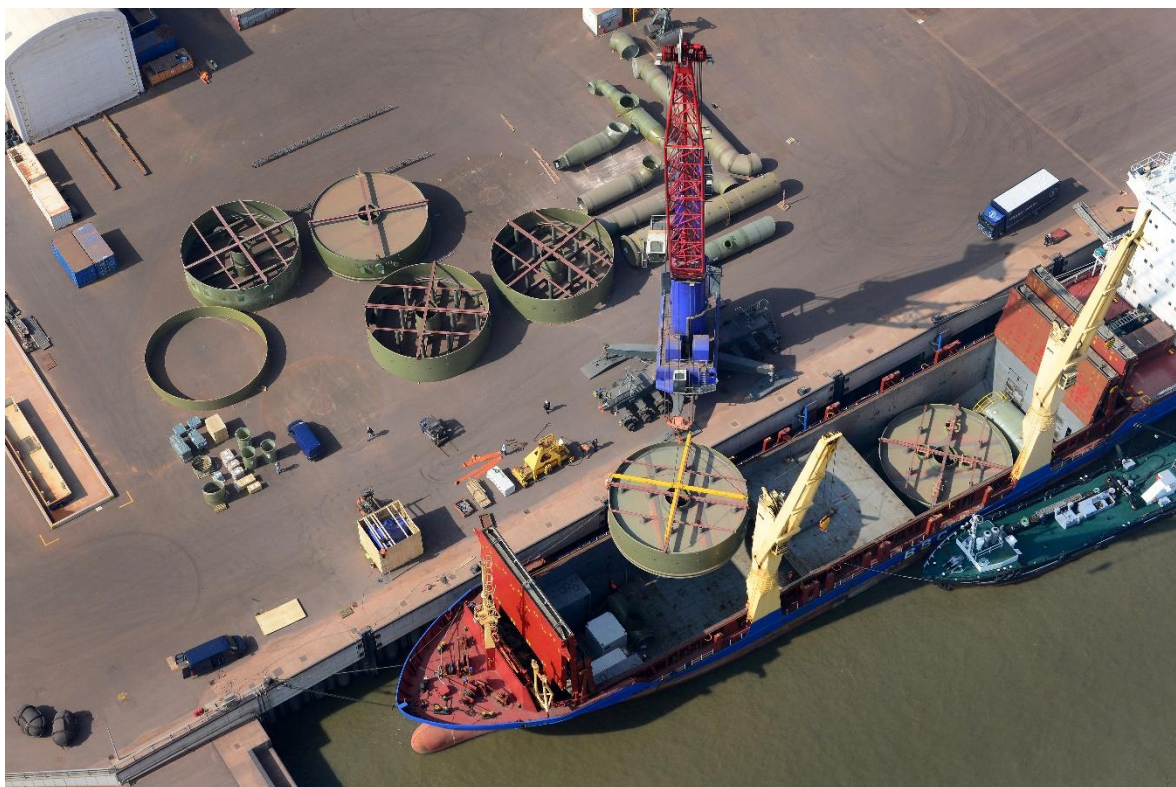


Northbound various kinds of dry bulk cargoes, e.g. sea salt, silica sand, biomass, fertilizer, are the predominant commodity.

All different Project cargoes are shipped as sole or part cargo always gaining best results for our clients.

List of References:

- | | | |
|-------------------|-----------------|---------------------|
| - Stora Enso | - Mayr Melnhof | - Vöest |
| - Metsä Bothnia | - Vöcklamarkt | - Salzgitter |
| - Rottneros | - Schweighofer | - ThyssenKrupp |
| - Södra | - Barthel Pauls | - Sibelco |
| - Domsjö Fabriker | - Ilim Timber | - CEMEX |
| - Heinzl | - Ziegler | - Lafarge Holcim |
| - Ence | - Mercer | - Heidelberg Zement |
| - Fibria | - Klenck | - Imerys |

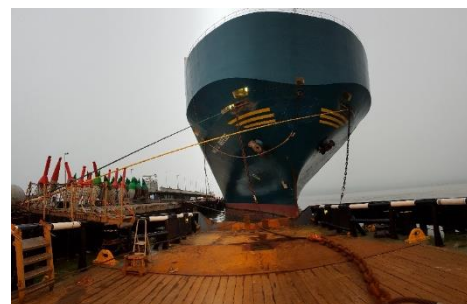


2.2) Port Agency

BREB offers Port-Agency Services in all German Ports and along the Antwerp-Zeebrugge-range to Shipping Lines, Charterers and Owners as well as for Offshore Projects.

Scope of Work includes for example but is not limited to following services:

- Contact Point (Control of Reporting Matrix)
- Vessel Service Planning
- Obtaining necessary approvals from Federal-, State- and Port Authorities
- Port call pre-planning (planning and booking of port services)
- Arrival and departure arrangements (piloting, tug assistance, mooring etc.)
- Customs clearing of inbound and outbound cargo and / or working material
- Customs and port clearance of vessel and crew
- Arrival clearance (boarding, recording and reporting of arrival events)
- Reporting of vessels position/movements and preparing a Statement of facts
- Providing information of all relevant port issues and condition
- Collecting and checking of all invoices related to the vessels port call including preparing and issuing of a disbursement account
- Cargo Pre-Planning incl. Check of Cargo Quantity
- Bill of Lading / Manifest Arrangements
- Coordination of fuel bunker for vessels
- Order and Coordination of Water Bunker for Vessels
- Coordination of and Supply of all consumables
- Coordination of all booked and arranged Services
- Monitoring of Vessels Operations
- Organizing disposal of ships waste as well as on board operating contractor's waste
- Administer incoming and outgoing goods (project cargo, tools, equipment...)
- Assisting with third party personal, Visitors, Surveyors...
- Claims handling



- Specify prices and co-ordinate ship- and project related spare parts and liaise with Owners and Contractors
- Arranging and organising Crew Change
- Arranging/booking Crew change per Helicopter and/or CTV
- Crew change fees for arranging local transfers included + Visa formalities
- Organising and preparing Kick-Off and Follow Up Meetings at the Project Harbour (including room-hire, catering, media service)
- Arranging transport of any goods in any sizes to and from the site (sea/road/air)



2.3) On-/Offshore-Industry & Wind Energy

Our Track-Record Offshore comprises among other shipping of all different WEC-Components including Seacable, **Port Agency** for Cable Layers, Installation Vessels, Survey- and OSV's, CTV's, Special Ships for Grouting and Noise-Emission, PSV's, Guard Vessel, AHT's, Trailing suction hopper dredger, Tugs and Barges and Heavy Lift Vessels, Port-Agency in Bremen, Bremerhaven, Cuxhaven, Stade, Sassnitz and Zeebrugge as well

as Vessel Coordination during Alpha Ventus, Generalagent for E.On Amrumbank West in Cuxhaven, Subagent for Siemens in Cuxhaven during Installation and Operation of Converter Platforms, Agent for Blue Water in Bremerhaven and Sassnitz for Offshore-Wind and Oil & Gas Projects, processing crew-changes with CTV's, and Helicopters.



List of Clients:

- | | |
|----------------|-----------------|
| - E.ON | - MPI Offshore |
| - Siemens/SGRE | - EMAS |
| - Ambau | - Prysmian |
| - Adwen | - Ballast Nedam |
| - Vestas | - Nordmark |
| - Nordex | - ABB |

3) Blue Water BREB GmbH

Blue Water BREB, founded December 2016 as joint-venture of Danish Blue Water Shipping and BREB, has a unique set-up, combining the knowledge and expertise of two strong companies. With this joint venture, all types of transport and logistical services at all key locations for the German offshore wind industry can now be offered.

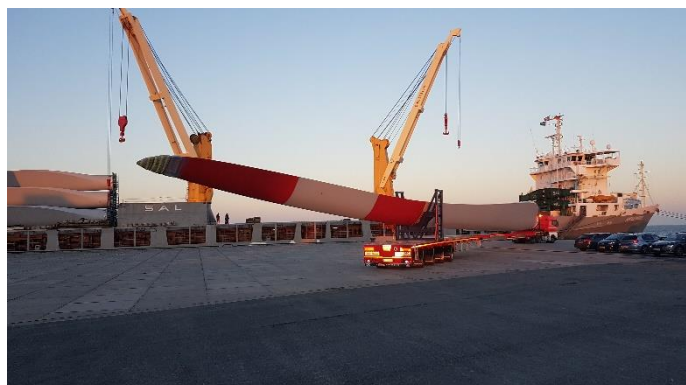
Blue Water Shipping brings solid expertise into Blue Water Breb, and holds a strong international position in not only the Wind industry, but in the energy-section as such. The main focus of the two partners will be to offer solutions tailored to the needs and demands of each client – and thereby optimizing the clients' supply chain.



The joint-venture of BREB and Blue Water is based on partnership with 50% shares in Blue Water BREB for both shareholders.

BWB runs an own terminal in Cuxhaven for handling of On- and Offshore WEC's on up to 200.000sqm. Custom tailored logistic services are rendered to the Siemens Gamesa Factory in Cuxhaven both for production and in-/outbound logistics.

In Mukran, BWB is Shareholder in Mukran Port Terminals since January 2019 and also active as Port Agent, e.g. for Molslinjen (Ferry Service Mukran-Bornholm), WASCO, NordStream 2 on behalf of Blue Water Shipping, Pipeline Slovakia-Project and others.



4.) Imprint and Contacts

Contact:

BREB GmbH & Co.KG
havenhostel Cuxhaven
Kpt.-Alexander-Str. 16
27472 Cuxhaven
GERMANY
Fax: +49 (0) 4721 590 54 99
Internet: www.breb.de



Branch Offices:



Universitätsallee 5
28359 Bremen

Hafeneingangsgebäude Sassnitz
Fährhafen 20b
18546 Sassnitz

BREB Belgium bvba
Rederskaai 30
8380 Zeebrugge - Belgien

Bremer Landesbank
IBAN EUR DE07 2905 0000 2002 1345 25
BIC BRLADE22
USt-IdNr. DE302080788



PIC:	Telefon	
E-Mail		
Arne Ehlers	+49 (0) 4721-59054 20	arne-ehlers@breb.de
Annelie Jung	+49 (0) 4721-59054 30	management@breb.de