



## ANMIRO

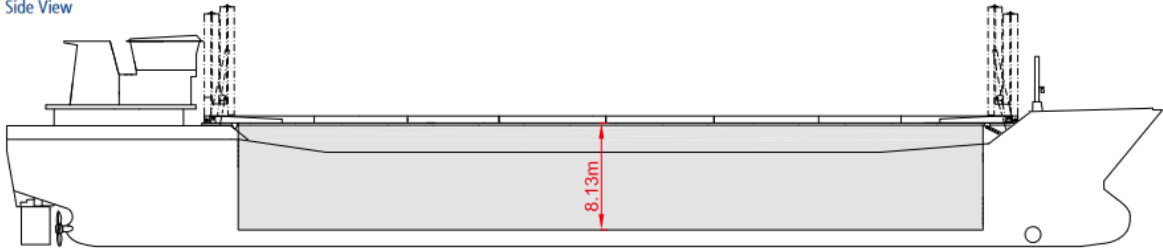


### SHIPS BASICS

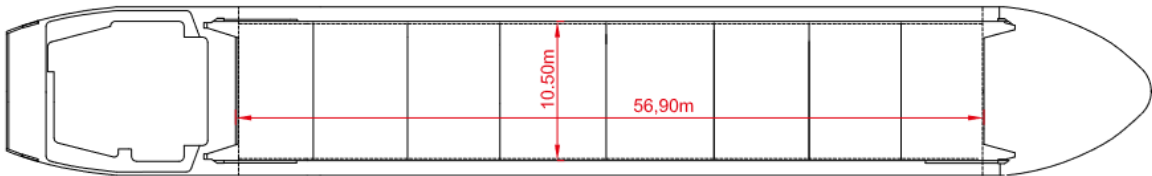
Name	ANMIRO	IMO	9434577
Built	2009	Flag	Antigua & Barbuda
Classification	GL EMCEA	Port of Registry	St. John's
Type	MPP Singledecker	Call Sign	V2DR9
GT / NT	abt. 2.461 / 1.369	Beam	abt. 12,80 m
dwcc summer / winter	abt. 3.600 / 3.500 mt	Length o.a.	abt. 87,90 m
Consumption	at sea 5,3 mts fuel per day in port 0,4 mts per day	Draft max.	5,51 m
		Speed	abt. 11 kn
		Floor space under deck	560 sqm / 6.028 sqft
		Floor space on deck	590 sqm / 6.351 sqft
Holds	1, fully box shaped		
Hold dimensions	abt. 56,90 x 10,50 x 8,13 m		
Hold capacity	4.672 cbm / abt. 164.990 cbft		
Bulk heads	2 pcs, 10 positions		
Hatch cover type	Folding types		
Deck strengths per sqm	15,00 mts on tanktop		
	1,00 mts on deck		
Container Capacity	Capacity 20' / 40' /	Timber fitted	Yes
	40'HC	Grain fitted	Yes
	Hold 180 / 75 / 30	IMO classes	Fitted for the carriage of
	Deck 156 / 78 / 0		cargoes of all IMO classes
Total 336 / 153 / 30			
Main Engine	MaK 8m20 1.520 kW	Bowthruster	Yes
Aux. Engine	Sisu 3 x 116 kW		



Side View



Main Deck



Hold & Double Bottom

