



## ADIANTE

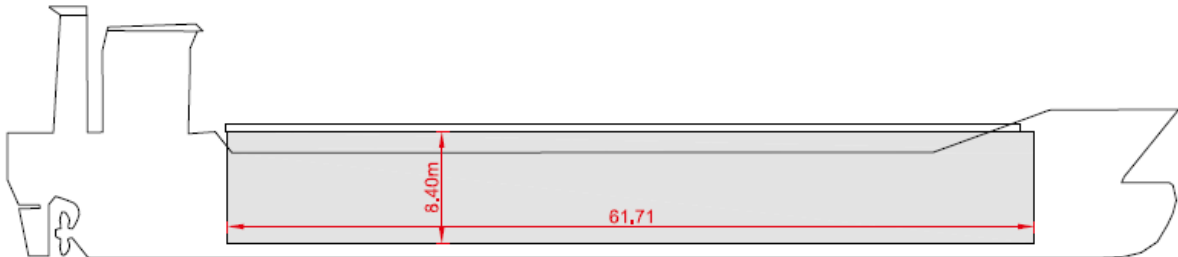


### SHIPS BASICS

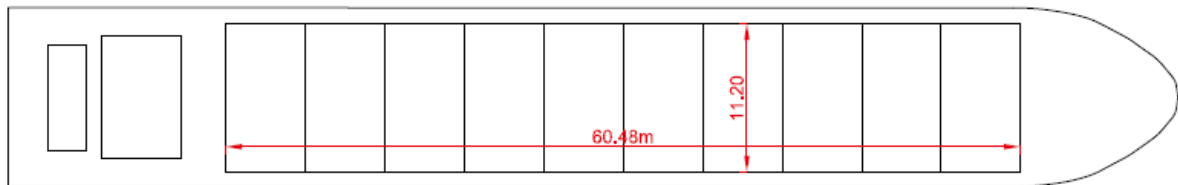
Name	ADIANTE	IMO	9360477
Built	2009	Flag	Madeira
Classification	GL EMCEA	Port of Registry	Madeira
Type	MPP Singledecker	Call Sign	CQMF
GT / NT	abt. 2.956 / 1.558	Beam	abt. 13,70 m
dwcc summer / winter	abt. 4.400 / 4.300 mt	Length o.a.	abt. 89,50 m
		Draft max.	6,00 m
Consumption	at sea 7,0 mts fuel per day	Speed	abt. 10,5 kn
	in port 0,5 mts per day	Floor space under deck	662 sqm / 7.152 sqft
		Floor space on deck	679 sqm / 7.308 sqft
Holds		1, box shaped	
Hold dimensions		abt. 60,48 x 11,20 x 8,40 m	
Hold capacity		5.615 cbm / abt. 197.292 cbft	
Bulk heads		2 pcs, 7 positions	
Hatch cover type		Pontoon type	
Deck strengths per sqm		12,00 mts on tanktop	
		3,20 mts on deck	
Container Capacity	Capacity 20' / 40' / 40'HC	Timber fitted	No
	Hold 111 / 48 / 15	Grain fitted	Yes
		IMO classes	No
Main Engine	MaK 6M25, 1.850 kW	Bowthruster	Yes
Aux. Engine	Caterpillar 2 x 229 kW		



Side View



Main Deck



Hold & Double Bottom

